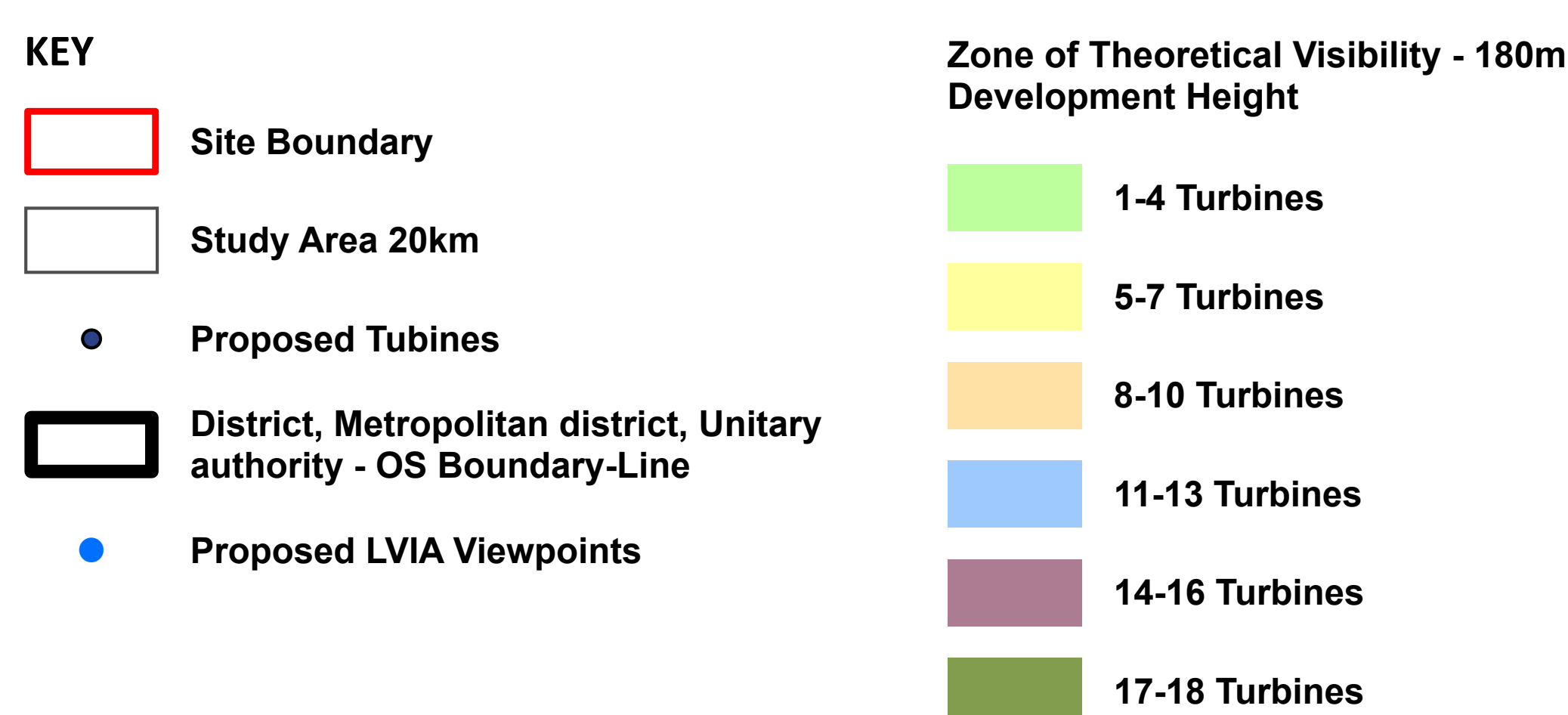
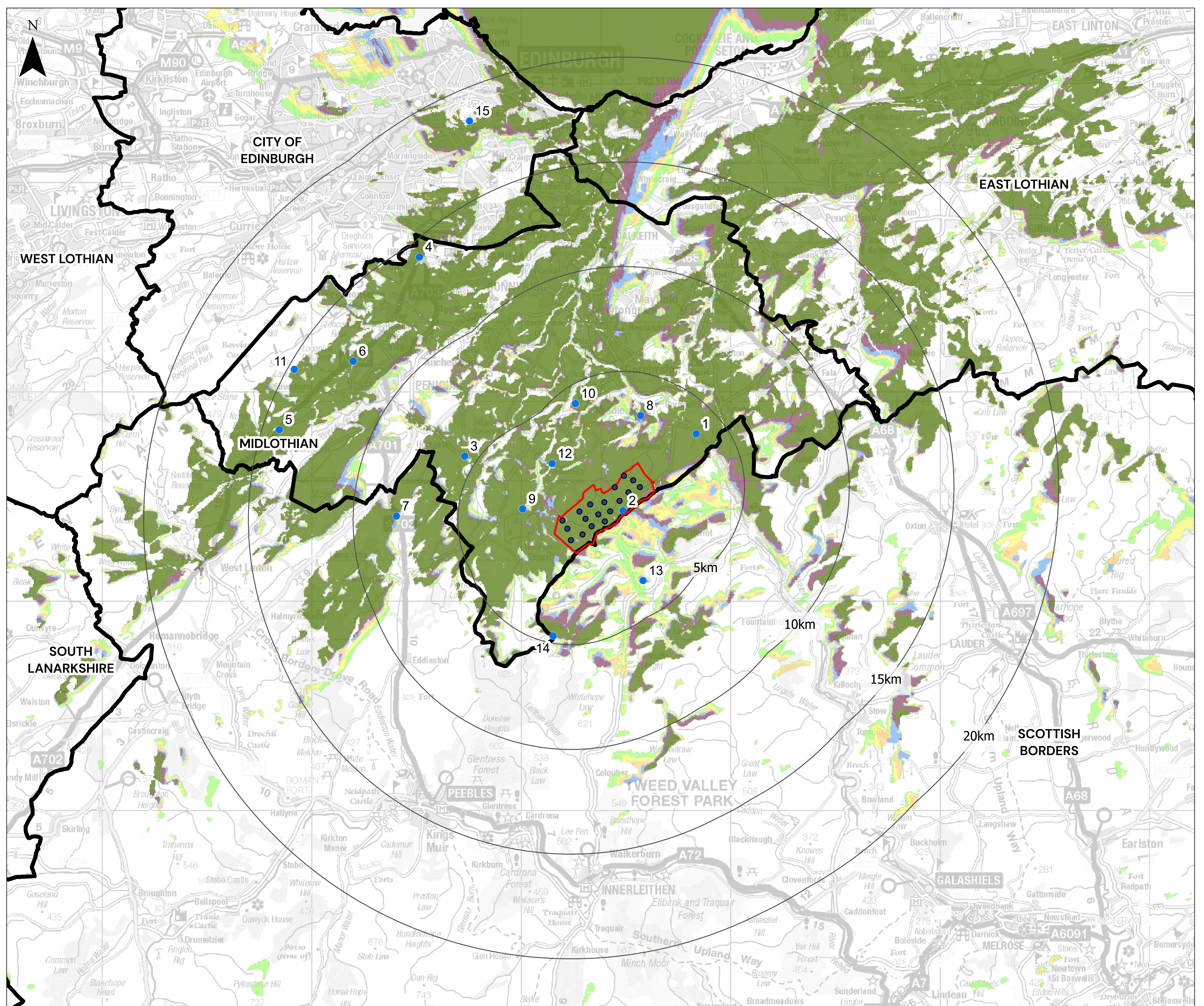


### Tip height Zone of Theoretical Visibility (ZTV) - 20km unscreened

#### Bare landform visibility

The Zone of Theoretical Visibility (ZTV) map below illustrates the theoretical extent of where wind turbines will be visible from within a 20km area, assuming 100% visibility and bare landform (without any trees, buildings or obstacles in the view) as per NatureScot guidance.

This map serves as a tool to inform the Landscape and Visual Impact Assessment (LVIA). The visibility indicated on the bare landform ZTV below is likely to be much less extensive in reality.



© CROWN COPYRIGHT, ALL RIGHTS RESERVED. 2023 LICENCE NUMBER 0100031673.

Coordinate System: British National Grid  
Projection: Transverse Mercator

Service Layer Credits : Historic Environment Scotland and Ordnance Survey data ©

0 2 4 8 km  
1:175,000 @ A3