

Welcome

Overview

Thank you for taking the time to attend this exhibition. The event presents the updated layout design for our wind farm and energy storage proposal, Torfichen Wind Farm, located approximately 6km south of Gorebridge, in Midlothian.

Since the project first became public in January 2023, we have undertaken an extensive amount of technical and environmental site survey work. We have also considered feedback from a wide range of key consultees on the proposal including local Community Councils and Midlothian Council.

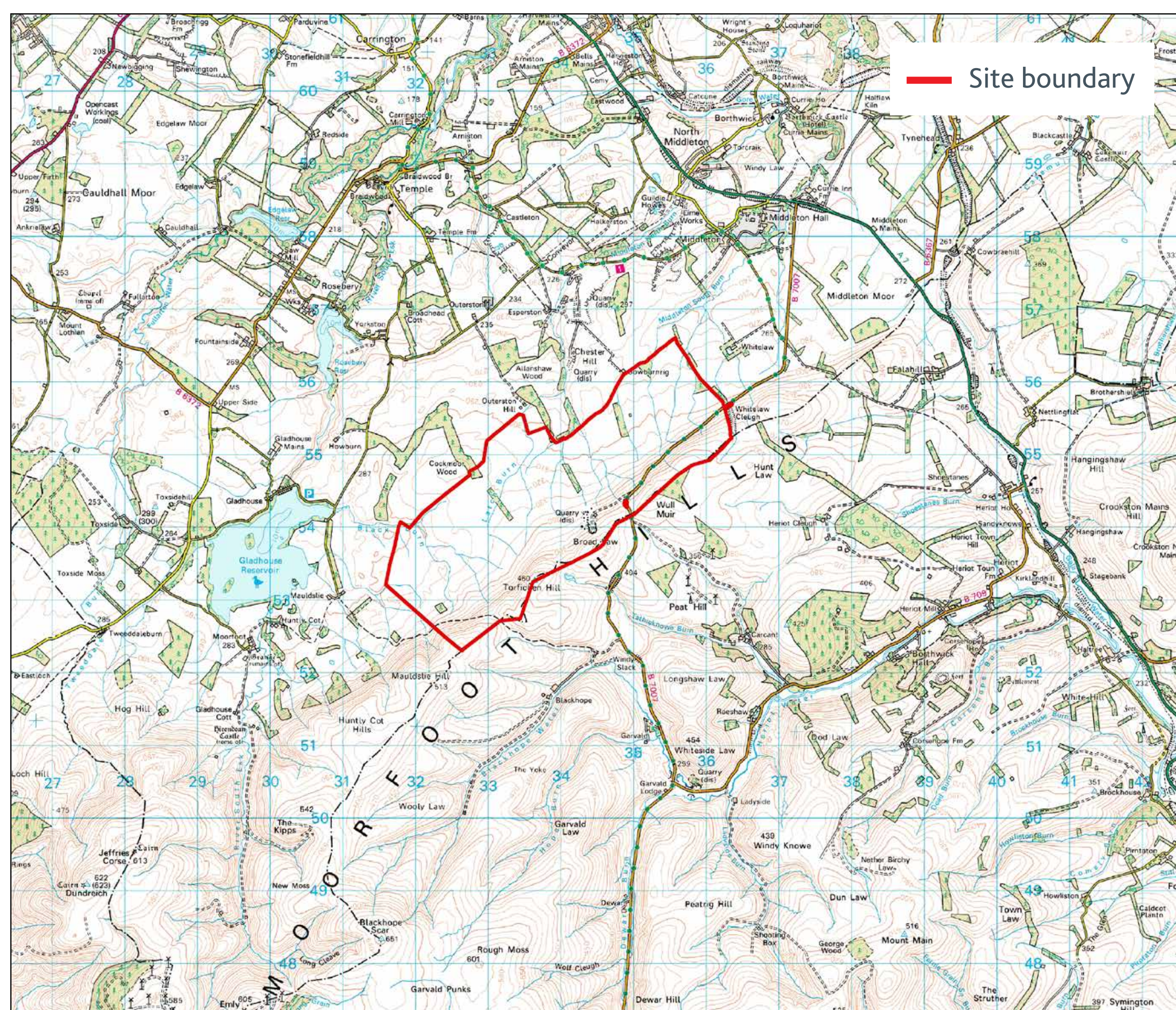
Public exhibition events were held in the local area in March 2023 to engage with people on the proposal and seek feedback on our early scoping design. Those events, held in North Middleton and Heriot, together with the subsequent consultation period, generated written feedback from the public for the project team to consider including comments on the following themes:

- Landscape and visual (turbine height, site location)
- Energy (onshore wind, other technologies)
- Exhibition (format, staff, communications)
- Acoustics (predicted sound levels)
- Construction (route to site, impact on private water supplies)
- Community benefit

We are grateful to everyone who provided feedback.

We are now at a stage where most of the site survey work is complete, the updated 18 wind turbine layout design is being refined and finalised, and the Environmental Impact Assessment (an extensive document which will accompany the planning application) is underway.

Site location map



© CROWN COPYRIGHT, ALL RIGHTS RESERVED. 2023 LICENCE NUMBER 0100031673.

About this exhibition

The purpose of this final suite of public exhibitions is to provide you with an opportunity to review the updated 18 wind turbine layout design, speak with the project team and ask any questions that you may have.

A wide range of project information is available at this exhibition including:

- **Infrastructure design updates** (turbines, tracks, battery storage, on-site substation, grid connection)
- **Environmental Impact Assessment considerations** (such as acoustics, cultural heritage, ecology and ornithology, private water supplies, peat, shadow flicker)
- **Visualisations** (photomontages and wirelines as well as visualisation software) to help give an impression of what the site could look like from different viewpoints within the area

This exhibition forms part of our pre-application consultation and, whilst the layout design is almost finalised, this event provides you with an opportunity to submit written feedback again to RES, if you wish, on the updated layout design.

Once the proposal is submitted into planning there will be an opportunity to submit formal comments on the proposal to the determining authority. More information about how to do this is provided on the 'Next steps' board.

As part of these exhibitions, we have produced a 'Report on feedback' which summarises the feedback received from the March 2023 exhibitions and subsequent consultation period and highlights any changes that have been made to the layout design in response to this feedback. Copies of this Report are available as part of the materials presented at this exhibition.

